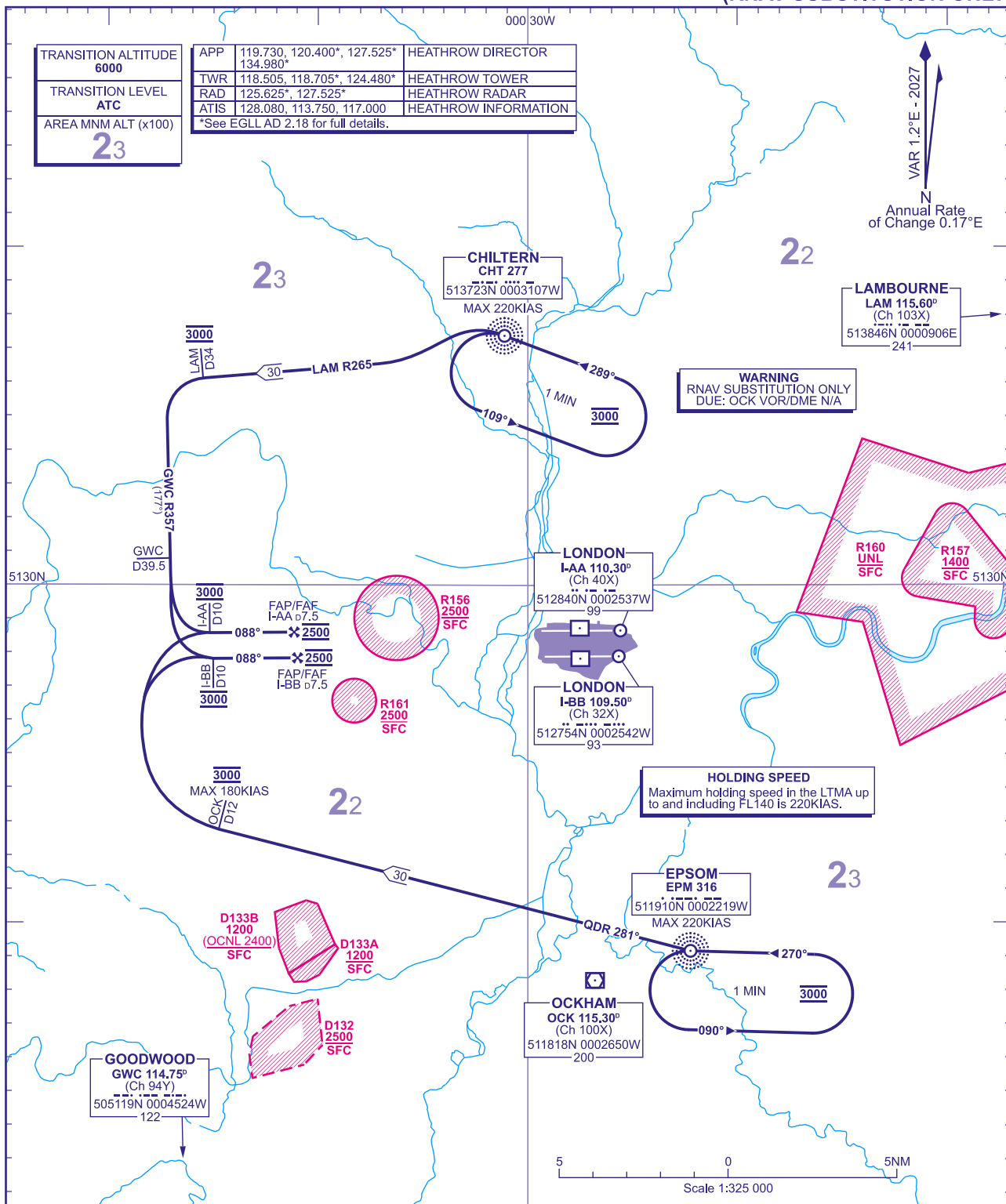


LONDON HEATHROW
via CHT and EPM
(RNAV SUBSTITUTION ONLY)

APP	119.730, 120.400*, 127.525* 134.980*	HEATHROW DIRECTOR
TWR	118.505, 118.705*, 124.480*	HEATHROW TOWER
RAD	125.625*, 127.525*	HEATHROW RADAR
ATIS	128.080, 113.750, 117.000	HEATHROW INFORMATION

*See EGLL AD 2.18 for full details.

VAR 1.2°E - 2027
Annual Rate of Change 0.17°E



CHT	Leave CHT NDB on LAM VOR R265 maintaining 3000 . At LAM p34 turn left onto GWC VOR R357. At GWC p39.5 turn left onto localiser I-AA (Rwy 09L) or I-BB (Rwy 09R), to be established by I-AA/I-BB p10. At I-AA/I-BB p10 descend to 2500 , then continue the ILS/DME or LOC/DME instrument approach procedure as detailed on the instrument approach charts.	Level at which to leave; 3000
EPM	Leave EPM NDB on QDR 281° maintaining 3000 . At OCK p12, at MAX 180KIAS, turn right onto localiser I-AA (Rwy 09L) or I-BB (Rwy 09R) to be established by I-AA/I-BB p10. At I-AA/I-BB p10 descent to 2500 , then continue the ILS/DME or LOC/DME instrument approach procedure as detailed on the instrument approach charts.	Level at which to leave; 3000

- 1 Continuous descent approach should be used whenever practicable unless otherwise instructed by ATC.
- 2 See Loss of Communication Procedures (Arriving Aircraft) in EGLL AD 2.22 Flight Procedures.